



THE JOURNEY SO FAR

RESEARCH MANAGEMENT AT UG

Outline of Presentation



1

ABOUT US – UNIVERSITY OF GHANA
Information about the University of Ghana

2

ORID – RESEARCH AND DEVELOPMENT
Structure and Mandate

3

SUCSESSES AND CHALLENGES
Research Management

4

EXPECTED OUTCOME OF FELLOWSHIP
Take home

About US



**UNIVERSITY
OF GHANA**



About US – Information on UG



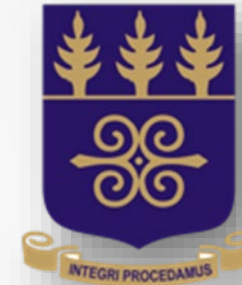
Established in 1948



Student population
61,613



Teaching staff
1417



**UNIVERSITY
OF GHANA**

COLLEGES UNDER UG

- **Health Sciences**
- Basic and Applied Sciences
- Education
- Humanities



Research Networks

About US – Research Focused Areas

Four priority areas where the university focuses and promote international collaboration in research initiatives;

- Malaria Research
- Trans-disciplinary Research into Climate Change Adaptation
- Enhancing Food Production and Processing
- Development Policy and Poverty Monitoring and Evaluation

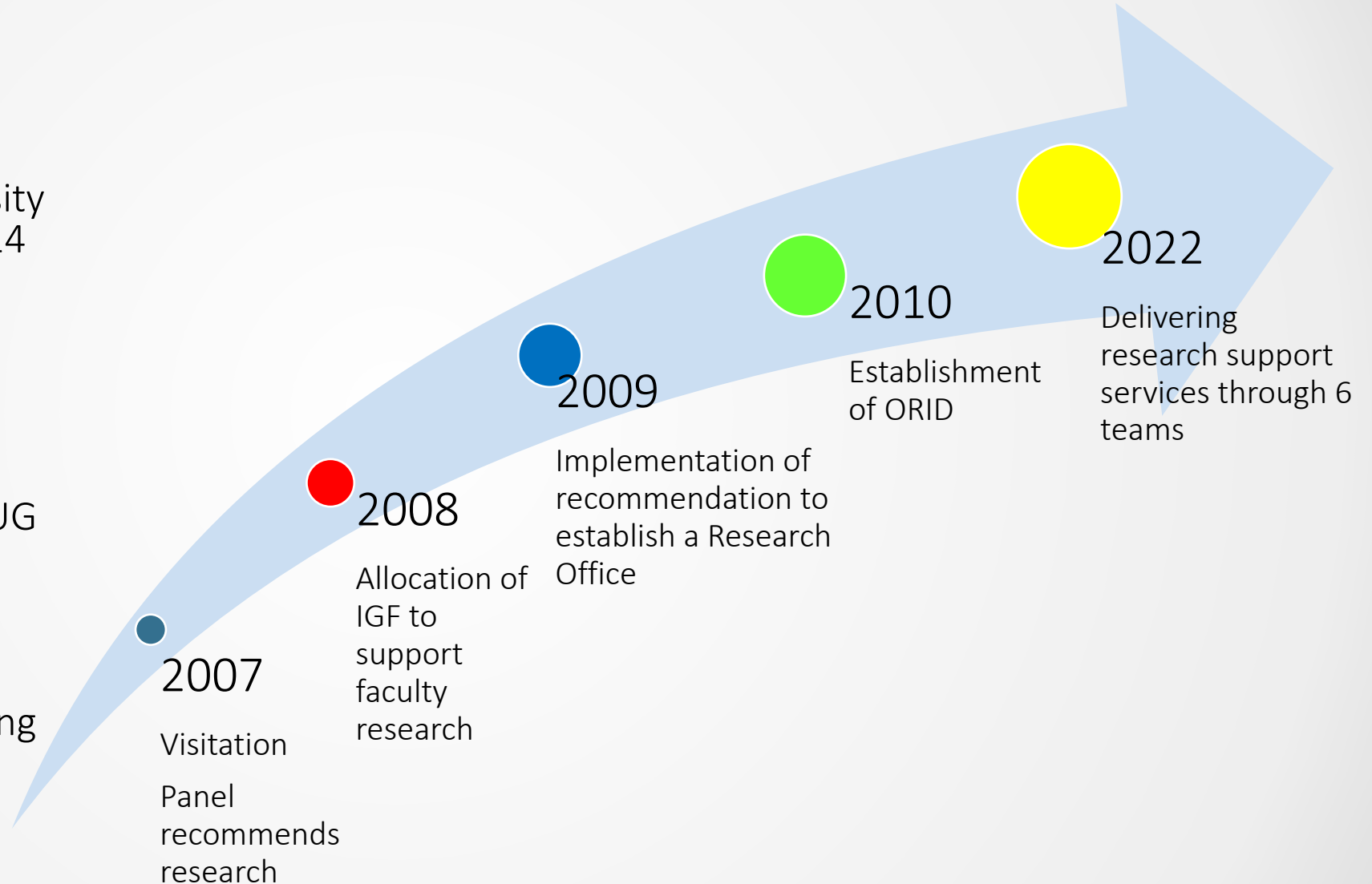
REsearch Management - How it started

Vision

To become a world-class research-intensive university over the next decade (2014 – 2024)

Mission

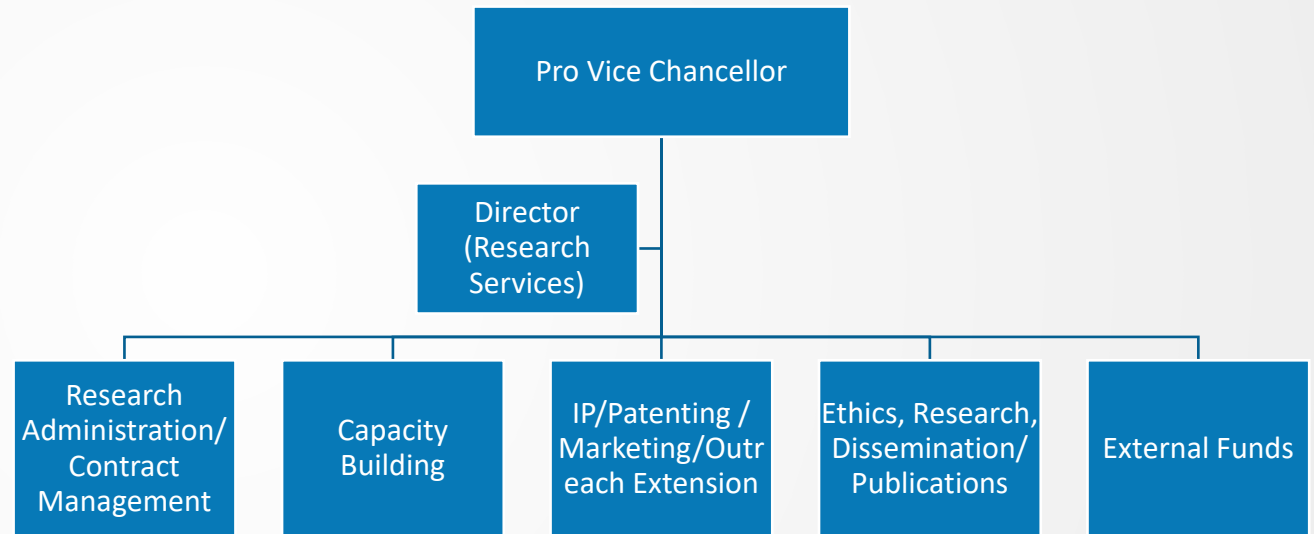
To create an enabling environment that makes UG increasingly relevant to national and global development through cutting-edge research as well as high quality teaching and learning



Office of Research Innovation and Development

Mandate

To promote ,coordinate and facilitate research activities in the University; and also lead the development of the university's strategic plans, including business plan and fund-raising strategies



Research Operations - ORID



**UNIVERSITY
OF GHANA**



Build research capacity
and skills of academics
and administrative staff



Pre- & Post Award Services

Support for proposal
development and
submission, research
grants and contracts
management



Human and Animal Research Ethics Services

Provision of uniform,
high quality ethical
clearance services
across the University



Technology Transfer & Intellectual Property

Develop innovative
mechanisms for
sustained engagement
with stakeholders



Publications, Dissemination & Translation

Ensure UG reaches
appropriate public
through the best outlets



Research Performance

Monitor, evaluate and
interpret data on
rankings

Strategic Interventions and Initiatives

1

Institutional
Mentorship

2

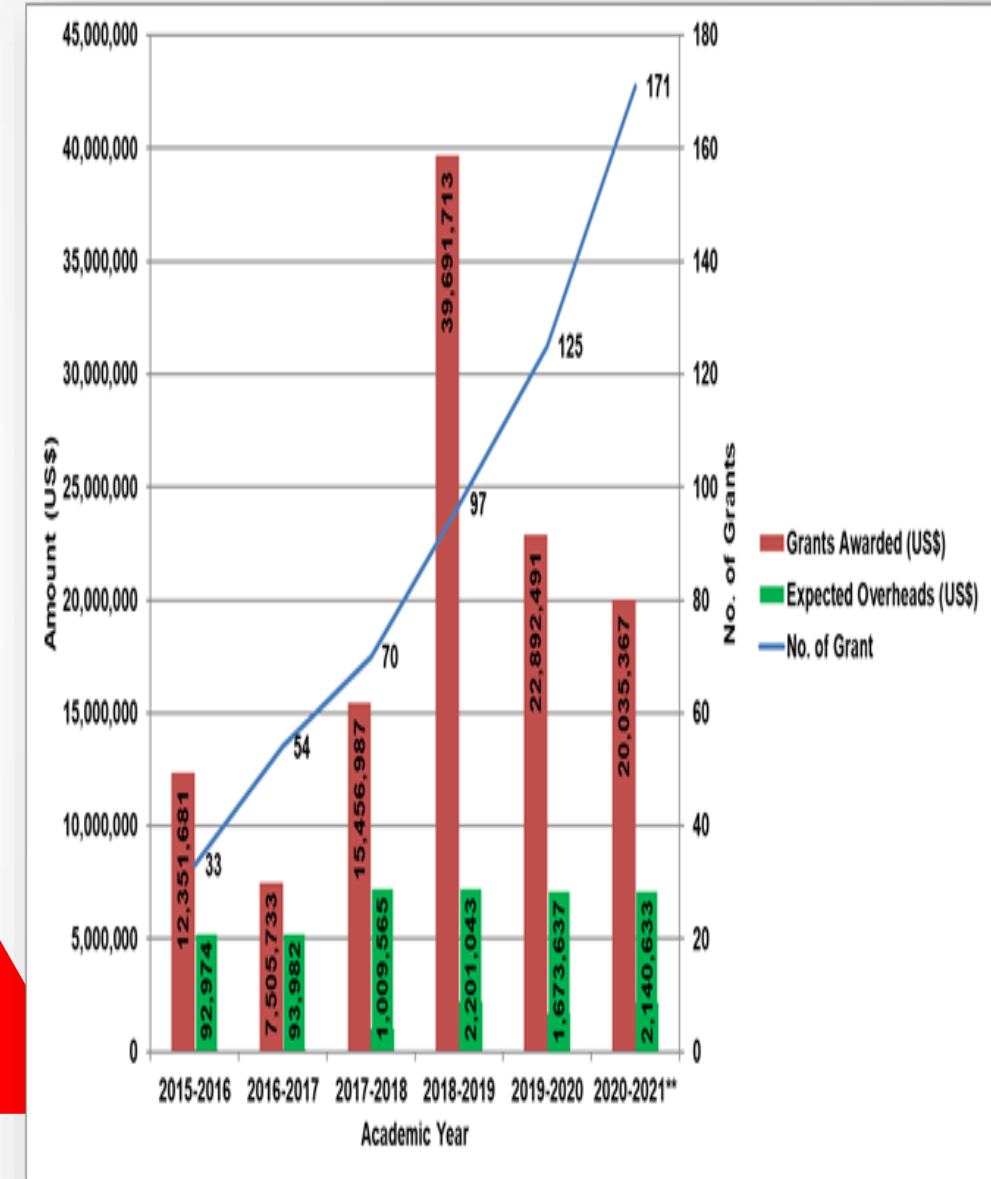
Restructuring Research
Management

3

UG Research Fund

4

Governance
framework



Some Challenges

- Understaffed
- Manual processes
- Identifying collaborators for Faculty
- Limited National Research Funds-thus most of our applications are subject to international competition
- Keeping abreast with current trends in the research funding landscape



Expected Outcomes of Study Visit

- Learn about the use of e-platforms for research support services
- Build on existing collaboration and further explore opportunities for enhanced collaboration between SU and UG.
- Learn about the research governance framework
- How to increase research income and be efficient in grants management

Acknowledgement



䷋

59.

NEA ONNIM NO SUA A OHU
HE WHO DOES NOT KNOW,
CAN KNOW FROM LEARNING

THANK
YOU

