



# Providing Robust Research Support Services at Syracuse University Through Cross-campus Partnerships



# Presenters



Christina Leigh Docteur  
Office of Research



Chetna Chianese  
Office of Research



Emily Hart  
Libraries



Brenna Helmstutler  
Libraries



Anne Rauh  
Libraries

# Agenda

- Your profiles
  - Please share you name & institution in chat!
- Our unit profiles
- Collaboration activities
  - Research reputation
  - Learning, training, and networking
  - Administration
  - Future efforts
- Conclusion
- Questions



# Setting the Stage

# Syracuse University

- Private research university
- R1 (Research Intensive) Carnegie Classification of Institutions of Higher Ed (up from R2 in 2015)
- 15,000 undergraduates
- 5,000 graduate students



# Restructuring to Focus on Research

## New & Unique Campus Support Structures

- Office/division restructuring
  - Office of Research: Proposal Support Services – 3 new positions
  - Libraries: Dept of Research & Scholarship (DRS) – focus teams including Digital & Open Scholarship and Research Impact
- Associate Deans for Research (ADRs) Leadership Group
  - Response to SU's mission of increasing research trajectory
- Initiatives to support & promote interdisciplinary research
  - Intramural grants, new faculty hires, and interdisciplinary research clusters

# Office of Research

- 5 administrative units and main office
- Led by Interim VPR since January 2020
- ~40 total staff
- 2 interdisciplinary centers also included but operate independently



# Proposal Support Services

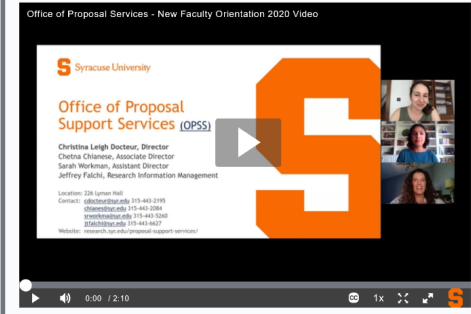
- New research development arm of Office of Research
- Manage intramural grants, limited submission, & many award nominations
- Funding opportunity circulation
- Grant development for large or multidisciplinary projects
- Hub of “SU RD Team” working with staff in schools, colleges & other units (like library!)

The Office of Proposal Support Services is responsible for supporting Syracuse University's proposal, research and faculty development efforts. This includes facilitating team-based collaboration around strategic funding opportunities, and managing the University's internal funding competitions, including both seed grant programs and externally funded limited submissions.

**In this Section**

- About Proposal Support Services
- Finding Funding
- Sponsored Funding Opportunities
- Internal Grant Programs
- Limited Submissions
- Proposal Support Services Inquiry Form

Office of Proposal Services - New Faculty Orientation 2020 Video

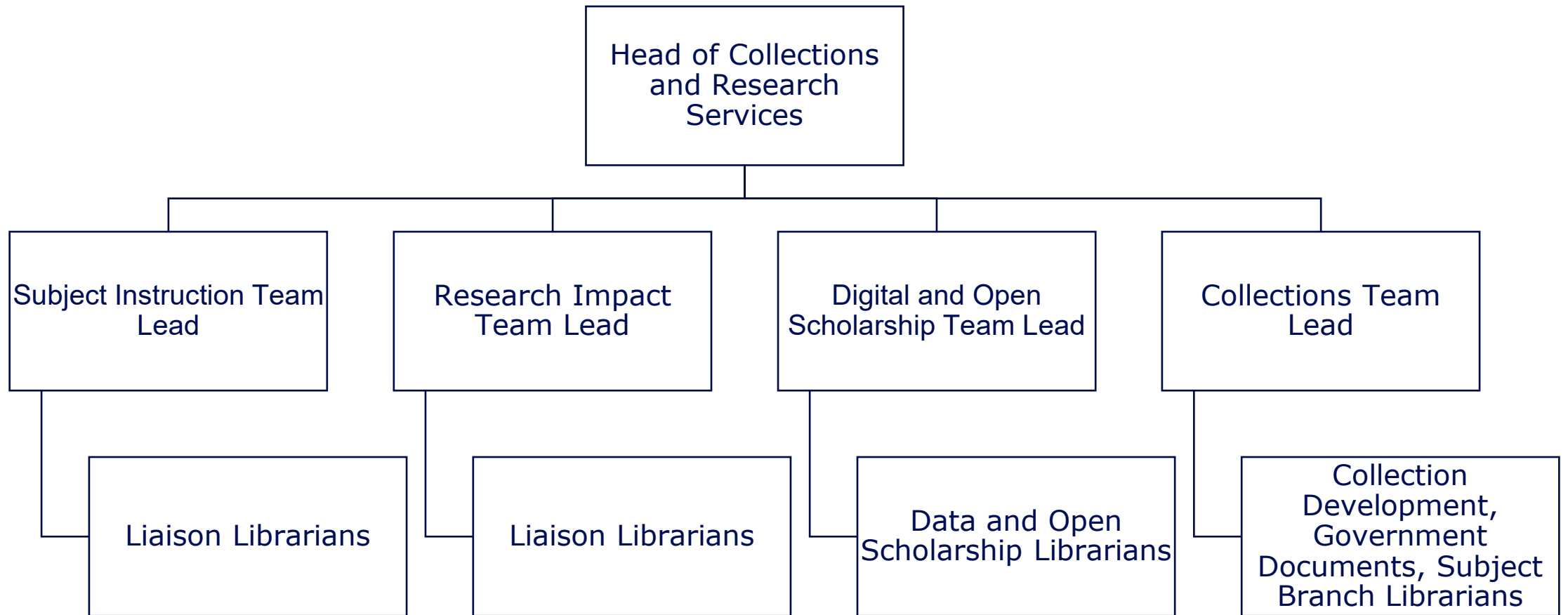


# Syracuse University Libraries

- 4.8 million items
- 1.2 million visits annually
- 205 total staff FTE
  - 53 librarians
  - 161 student employees
- Organized like academic college
  - Dean reports to provost
  - Associated deans focused on research & academics
- Includes Syracuse University Press



# Department of Research and Scholarship



# What Prompted Collaboration?

## Syracuse University

[Home](#) [Profiles](#) [Research Units](#) [Equipment](#) [Grants](#) [Research Output](#) [Activities](#) [...](#)

### Maxwell School of Citizenship & Public Affairs

Syracuse University

[Overview](#) [Fingerprint](#) [Network](#) [Profiles \(129\)](#) [Grants \(339\)](#) [Research Output \(2810\)](#) [Activities \(2\)](#) [...](#)

#### Fingerprint

Dive into the research topics where Maxwell School of Citizenship & Public Affairs is active. These topic labels come from the works of this organization's members. Together they form a unique fingerprint.

Panel Data  
BUSINESS & ECONOMICS

Evidence  
SOCIAL SCIENCES

Politics  
SOCIAL SCIENCES

Geography  
SOCIAL SCIENCES

Estimator  
BUSINESS & ECONOMICS

Policy  
EARTH & ENVIRONMENTAL SCI...

Labor  
SOCIAL SCIENCES

Random Effects  
BUSINESS & ECONOMICS

# Research Impact Team

Team focuses on supporting the University Research Enterprise at both institutional and individual level.

- RIM System
- Research Metrics
- Responsible Metrics
- Research Reputation
- ORCID
- Funding Discovery
- Systematic Reviews

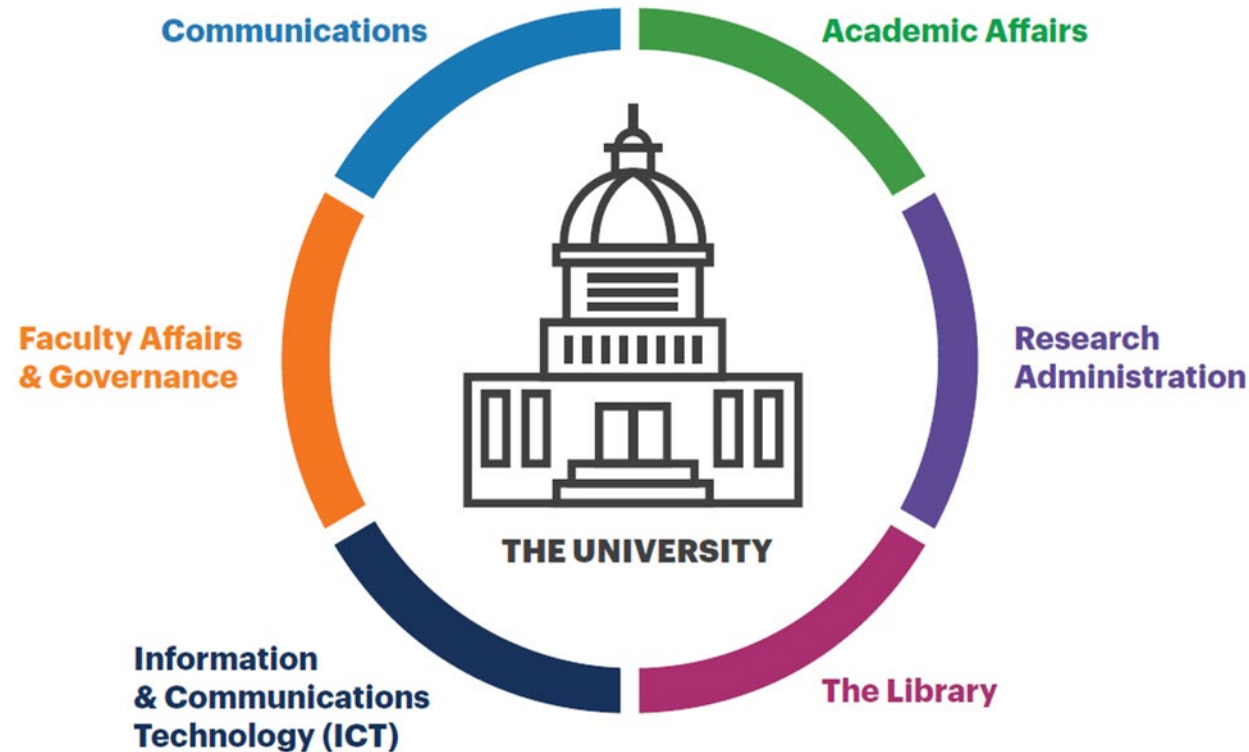
# Identifying & Filling in the Gaps

- From independent reactionary services to...
  - Exploring where we overlap
  - Shared planning & collaboration
  - Greater reach



# Collaboration Activities: Research Reputation

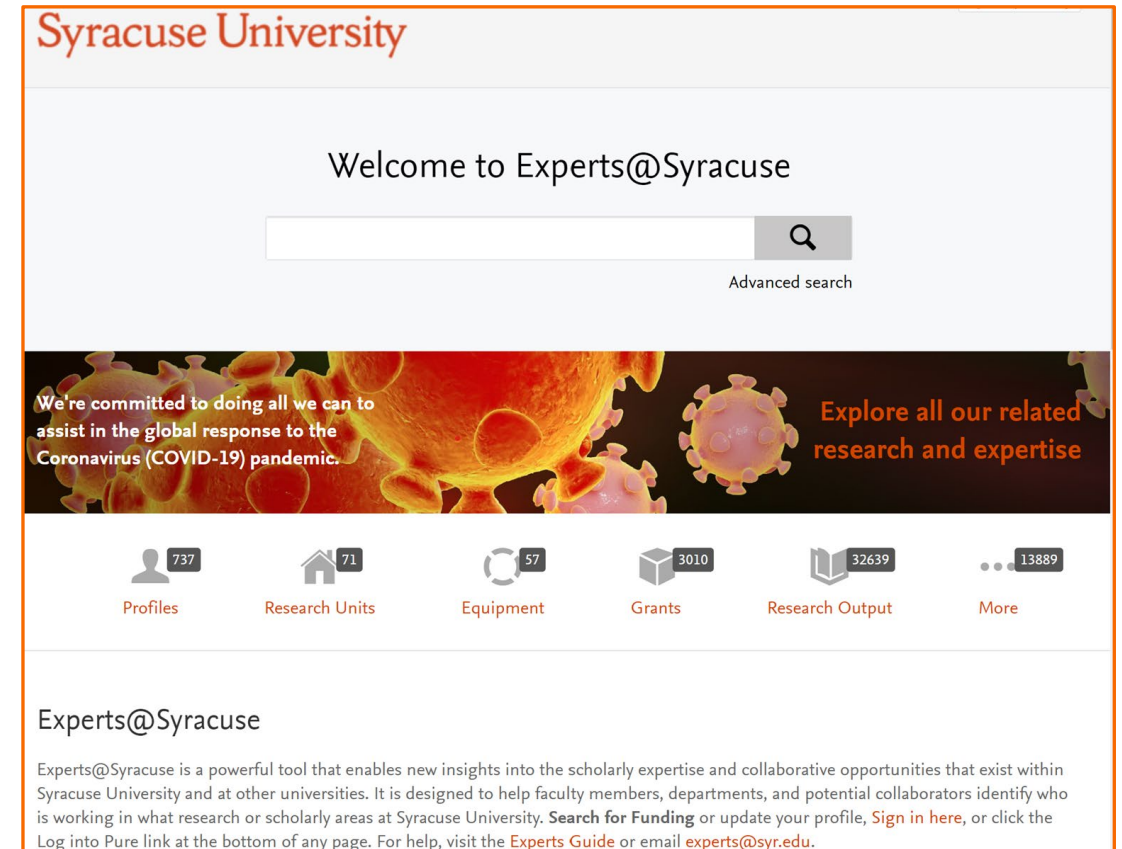
# Cross-Campus Partners & Shared Learning



Bryant, Rebecca, Annette Dortmund, and Brian Lavoie. 2020. *Social Interoperability in Research Support: Cross-Campus Partnerships and the University Research Enterprise*. Dublin, OH: OCLC Research. <https://doi.org/10.25333/wyrd-n586>

# Experts@Syracuse (Pure)

- Jointly Managed
- Experts includes: faculty profiles, reporting module, & funding sources
- Subject librarians have profiles
- Graduate student support



# Research Reputation

- Scopus & Web of Science Affiliation
- Research Metrics Challenge

# Collaboration Activities: Learning, Training, and Networking

# Tools for Learning

- Research Guides – ORCID, DMPTool, Scopus, Mendeley, InCites
- Funding Discovery
  - Pivot
  - Foundation Directory Online

# Training Activities & Workshops

- Joint hosting of trainings for the tools for learning
  - Ex. Funding Discovery Tools for Librarians
- Utilizing Experts@Syracuse
- Women in Science & Engineering (WISE) Graduate Student Sessions
  - Research impact
  - Funding opportunities

# Networking

- Pure User Group - PSS & Library reps attended conference
- Faculty FUNding
  - Faculty award winners share experience, tools discussed for funding discovery and research reputation.
  - Plan to reframe content in virtual format

# Collaboration Activities: Administration

# Shared Costs Savings

Shared costs = more resources

- More resources for research initiatives & staff development
  - PURE “Experts” \$\$ split; jointly sponsoring sessions for 2x coverage at 1/2 cost; hosting more on-campus visitors
- United front with vendors
- Or ... less resource cutting due to COVID-based strain

# Leveraging Platforms, Data & Knowledge

- Institutional repository
- Data management and grant compliance
- Open access journal support

# Selected Future Collaborations

- Reactionary to evidence-based planning
- Needs assessment
- ORCID institutional subscription
- Understanding university rankings
- Shared promotion of resources and services
- New faculty/staff joint training opportunities

Conclusion

# Interoperability Challenges

- Language
  - Research Administration versus Research Development
  - Proposal Development
- Working together
  - Google Drive versus Microsoft OneDrive
  - Scheduling via Outlook

# Takeaways from the Joint Efforts

- Enhanced Syracuse University visibility (and reputation!)
- Understanding evolution of research emphasis
- Strong line of communication and shared goals between units
- Overall, positive outcomes for faculty, staff, students

Connecting pieces of the research lifecycle

# Questions?

Christina Leigh Docteur, Office of Research, [cdocteur@syr.edu](mailto:cdocteur@syr.edu)  
Chetna Chianese, Office of Research, [cchianes@syr.edu](mailto:cchianes@syr.edu)  
Emily Hart, Syracuse University Libraries, [ekhart@syr.edu](mailto:ekhart@syr.edu)  
Brenna Helmstutler, Syracuse University Libraries, [bhelmstu@syr.edu](mailto:bhelmstu@syr.edu)  
Anne Rauh, Syracuse University Libraries, [aerauh@syr.edu](mailto:aerauh@syr.edu)

